

# Strand Bridge House

LONDON WC2



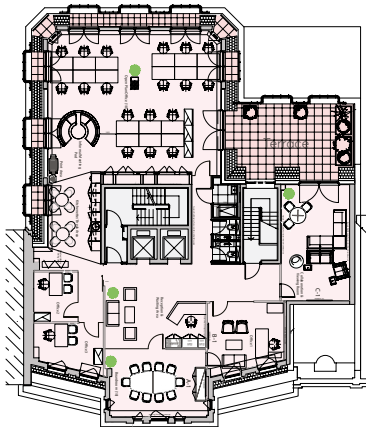
5th & 6th floors of Grade A office  
space with panoramic views

1,578 – 4,400 sq ft - TO LET

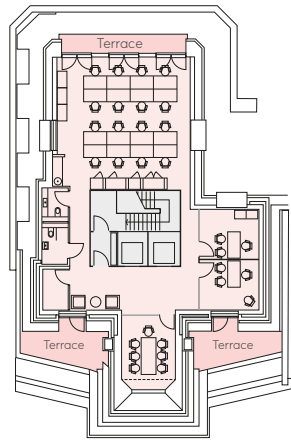
## Description

The 5th & 6th floors comprise of fully fitted office suites which benefit from private terraces and stunning views into London.

The offices have been fitted out to provide board rooms, meeting rooms, private offices, kitchenettes and 38 open plan desks over the two floors.



Fifth Floor - 2,822 sq ft



Sixth Floor - 1,578 sq ft

## Amenities

- Manned, smart reception
- Fully fitted offices.
- 2 x 10-person passenger lifts
- Kitchenette on both floors
- Excellent natural light
- Private terraces
- Cycle storage & shower facilities
- Furniture available



## Location

Strand Bridge House is located on the south side of the Aldwych at the junction with Waterloo Bridge/Lancaster Place. The area is constantly changing and improving in terms of local amenities and with Covent Garden a short walk away.

Temple, Holborn & Embankment underground stations are all within short walking distance. Waterloo and Charing Cross mainline stations are a short walk, while numerous bus routes serve the area.

## Terms

- **Lease:** Assignment of the lease until November 2026 outside the Landlord and Tenant Act.
- **Rents/Rates/Service Charge:** On application.
- **EPC:** Rating B

[View 360 tour](#)

## Contact

For more information or to book a viewing, please contact the agents:

**Richard Williams**  
07966 106 833  
rwilliams@shw.co.uk

**Rachel Good**  
07740 449 381  
rgood@shw.co.uk

